

TOMLAB INSTALLATION GUIDE

Anders O. Göran¹ and Marcus M. Edvall²

October 1, 2009



¹Tomlab Optimization AB, Västerås Technology Park, Trefasgatan 4, SE-721 30 Västerås, Sweden, fredrik@tomopt.com.

²Tomlab Optimization Inc., 1260 SE Bishop Blvd Ste E, Pullman, WA, USA, medvall@tomopt.com.

Contents

Contents	2
1 Installation Guide Overview	3
2 Supported platforms	3
3 Downloading TOMLAB	3
4 Installing TOMLAB	4
4.1 Install on Windows	4
4.2 Upgrade on Windows	4
4.3 Install on Unix-like systems	4
4.3.1 Interactive installation	4
4.3.2 Text mode interactive installation	6
4.3.3 Unattended installation	8
4.4 Upgrade on Unix-like systems	9
5 Setting environment variables	9
5.1 Shared libraries path	10
5.1.1 Windows	10
5.1.2 Unix-like systems	10
5.1.3 MATLAB 7.8 on 64-bit Linux	11
6 Installing TOMLAB license files	11
7 Setting up Xpress	12
8 Setting up CPLEX	12
9 Starting TOMLAB	12

1 Installation Guide Overview

This guide describes the installation of the TOMLAB Optimization Environment on the following operating systems: Windows (XP, 2000, XP-64, Vista, 7), Linux (32 and 64-bit), Mac OS X (Intel). It is basically the same procedure on all operating systems: Execute the installer, possibly set some environment variables and install the license files.

The first step is to [register as a TOMLAB user](#) and download the appropriate distribution. Execute 'ver' and 'computer' in MATLAB to find out which version you have.

Make sure the system is supported by TOMLAB in Section 2, then go to Section 3 and follow the instruction to obtain a copy of TOMLAB. When the installation file has been downloaded, go to Subsection 4 for the system in question and follow the instructions. To get some modules of TOMLAB to work, e.g: TOMLAB /CPLEX and TOMLAB /KNITRO, some environment variables may need to be set. How to do this is described in Section 5. The last step is to install the license file(s), which is described in Section 6.

2 Supported platforms

TOMLAB supports the following platforms and MATLAB versions:

- Windows 32-bit (MATLAB 6.5 and above)
- Windows 64-bit (MATLAB 7.3 and above)
- Linux x86 32-bit (MATLAB 7.1 and above)
- Linux x86 64-bit (MATLAB 7.3 and above)
- Mac OS X (MATLAB 7.3 and above)

3 Downloading TOMLAB

In order to download TOMLAB a myTOMLAB account needs to be created at: <http://tomopt.com>. When a myTOMLAB account exist, login and go to the Download → Products section, from where TOMLAB can be downloaded.

Here is a complete list of the files needed:

- Windows 32-bit,
 - MATLAB ≥ 7.4 : `tomlab-win32-setup.exe`
 - MATLAB 6.x/7.x: `tomlab-win32-73-setup.exe`
- Windows 64-bit,
 - MATLAB ≥ 7.3 : `tomlab-win64-setup.exe`
- Linux,
 - MATLAB ≥ 7.4 : `tomlab-lnx32-gcc41-setup.bin`

- MATLAB 7.1-7.3: `tomlab-lnx32-gcc34-setup.bin`
- Linux 64-bit,
 - MATLAB \geq 7.3: `tomlab-lnx64-setup.bin`
- Mac OS X,
 - MATLAB \geq 7.3: `tomlab-osx-setup.dmg`

4 Installing TOMLAB

This section describes how to install the TOMLAB software. Follow the instructions in the section for your operating system.

4.1 Install on Windows

For Windows an installer extracts the TOMLAB files and automatically sets the `PATH` environment variable to point at directories containing dynamic libraries required by some TOMLAB modules. See Section 4.3.1 for more information about the steps.

It is recommended to terminate all instances of MATLAB during the installation to make sure the `PATH` environment variable is properly set in the MATLAB environment when starting to use TOMLAB. Execute `getenv('path')` in MATLAB to confirm the presence of `tomlab/shared`.

As the `PATH` environment variable is set automatically, one can skip Section 5 and go directly to Section 6.

If the installer failed to set the `PATH` environment variable, go to Section 5 and read about how to do it manually.

It may be needed to reboot the computer after installation.

4.2 Upgrade on Windows

With Add/Remove Programs from the control panel, remove the TOMLAB Optimization Environment. Make sure that (only) `tomlab.lic` remains in the installation folder and install the new version in the same location. As defaults in TOMLAB may change over time a backup copy of the old version is recommended.

4.3 Install on Unix-like systems

The software is installed by a self-extracting executable installer, similar to the one used on Windows systems. The files for each operating system can be found in Section 3.

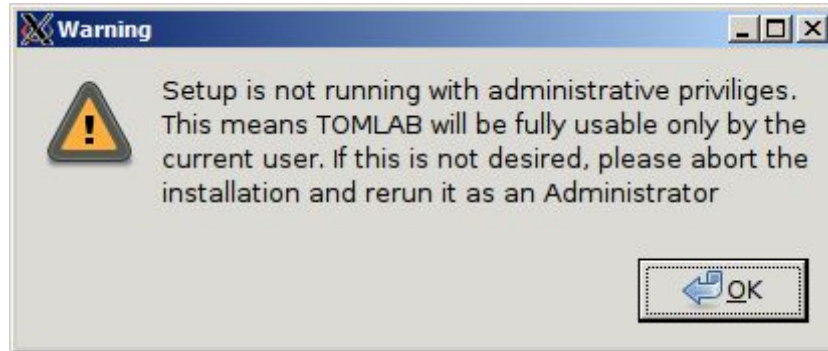
After downloading the installer for your platform and Matlab version, simply execute the `tomlab-X-setup.bin` file, where X represents your platform and Matlab version. The installer can be run in text mode if no display is available.

4.3.1 Interactive installation

Execute the installer binary by double clicking it's icon, or invoke it from a shell:

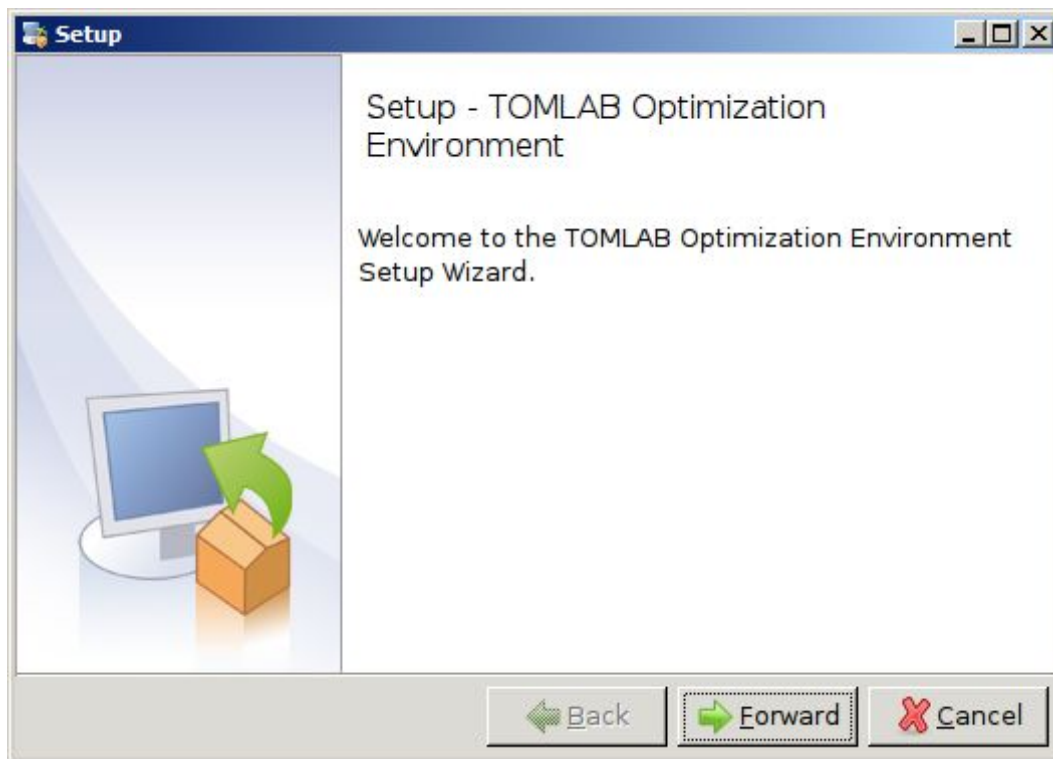
```
[user@host:~] ./tomlab-X-setup.bin
```

If you are running the installer as a regular user, a warning may be displayed.



Currently this warning can be ignored since a manual step (see Setting environment variables 5) is still required to make TOMLAB fully usable.

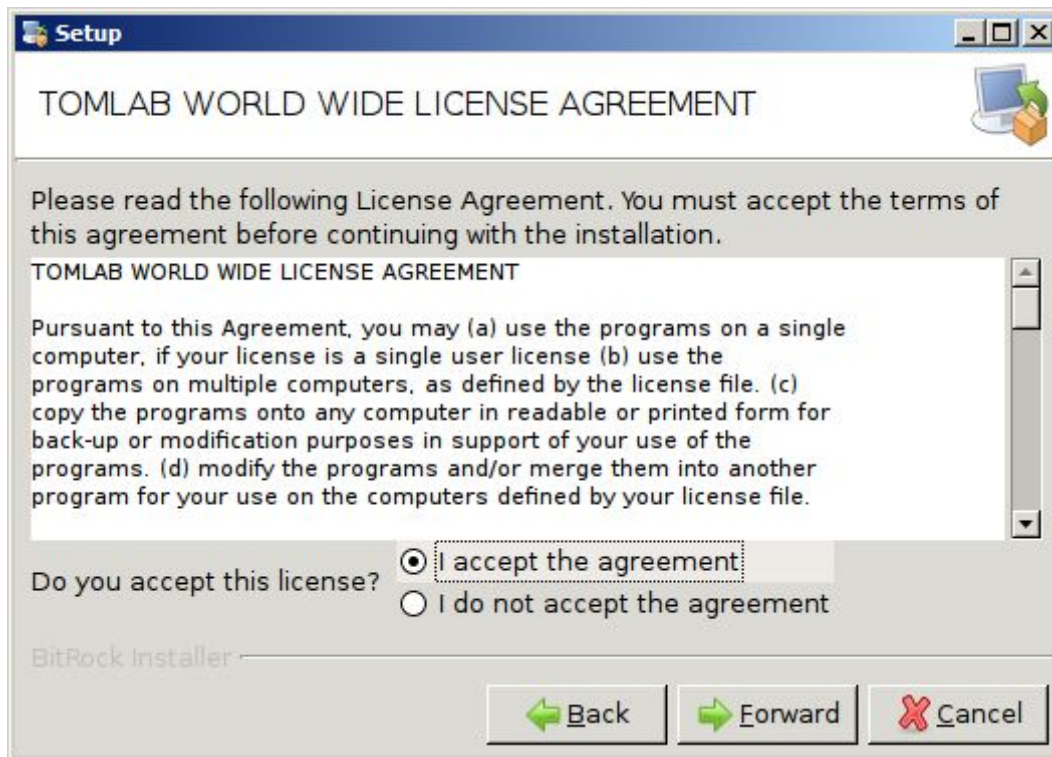
At the welcome screen, simply press Forward.



The TOMLAB license agreement will be displayed. Please read it and mark the "I accept the agreement" if you agree to be bound by it. Press Forward.

Enter the directory in which to install TOMLAB. **Please note that a 'tomlab' directory will be added to the path you specify here.**

The default location for single user installations is in the \$HOME directory.



The default location if installing with super-user privileges is in `/opt/tomlab` (will show as `/opt`) in the dialogue. Press Forward after entering the desired path.

At the Component Selection screen, it is safe to leave everything selected. Only deselect packages if you know you need to do so.

Press Forward to proceed.

During installation, a progress bar will appear.

At the final page, simply press the Finish button to exit the installer.

4.3.2 Text mode interactive installation

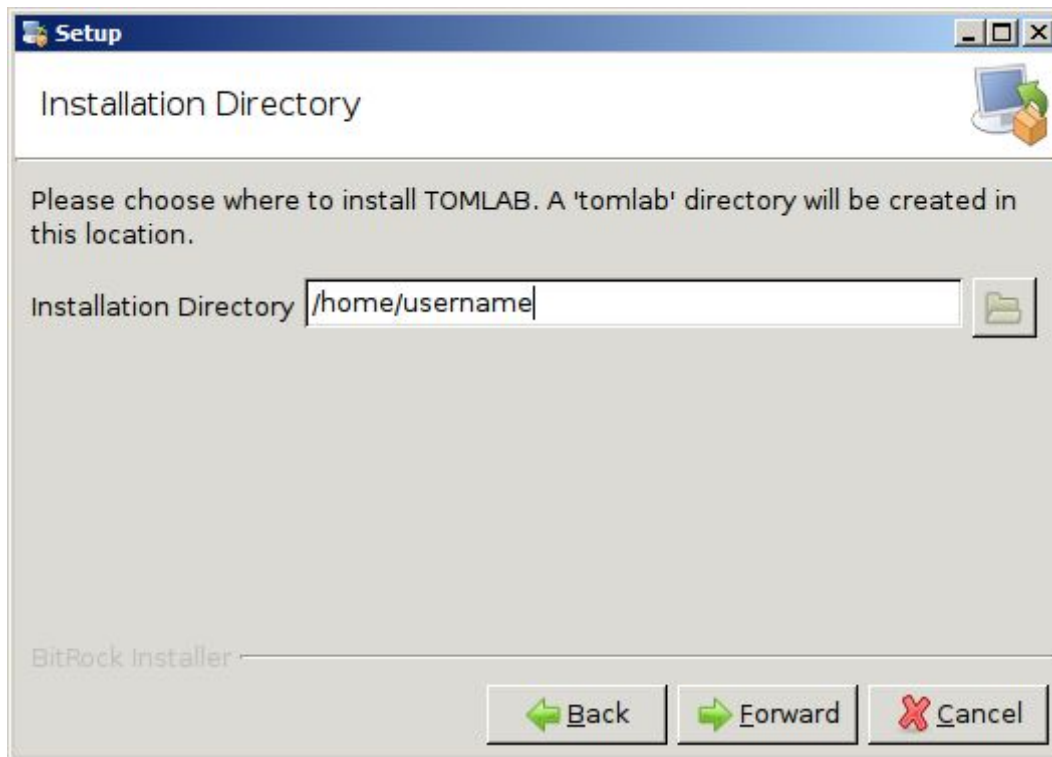
Execute the installer from the shell.

```
[user@host:~]$ ./tomlab-X-setup.bin --mode text
```

If you are running the installer as a regular user, a warning may be displayed:

```
Warning: Setup is not running with administrative privileges.  
This means TOMLAB will be fully usable only by the current user.  
If this is not desired, please abort the installation and rerun  
it as an Administrator Press [Enter] to continue :
```

Currently this warning can be ignored since a manual step is still required to make TOMLAB fully usable by anyone.



The TOMLAB license agreement will be displayed - press Enter several times to read the agreement and at the question if you accept the license, press "y" if you accept, or "n" otherwise.

Do you accept this license? [y/n]:

Enter the location where TOMLAB will be installed. **Please note that a directory 'tomlab' will be created in this location, i.e. do not enter a trailing 'tomlab' dir yourself.**

The default location for single user installations is in the \$HOME directory.

The default location if installing with super-user privileges is in /opt/tomlab (will show as /opt) in the dialogue.

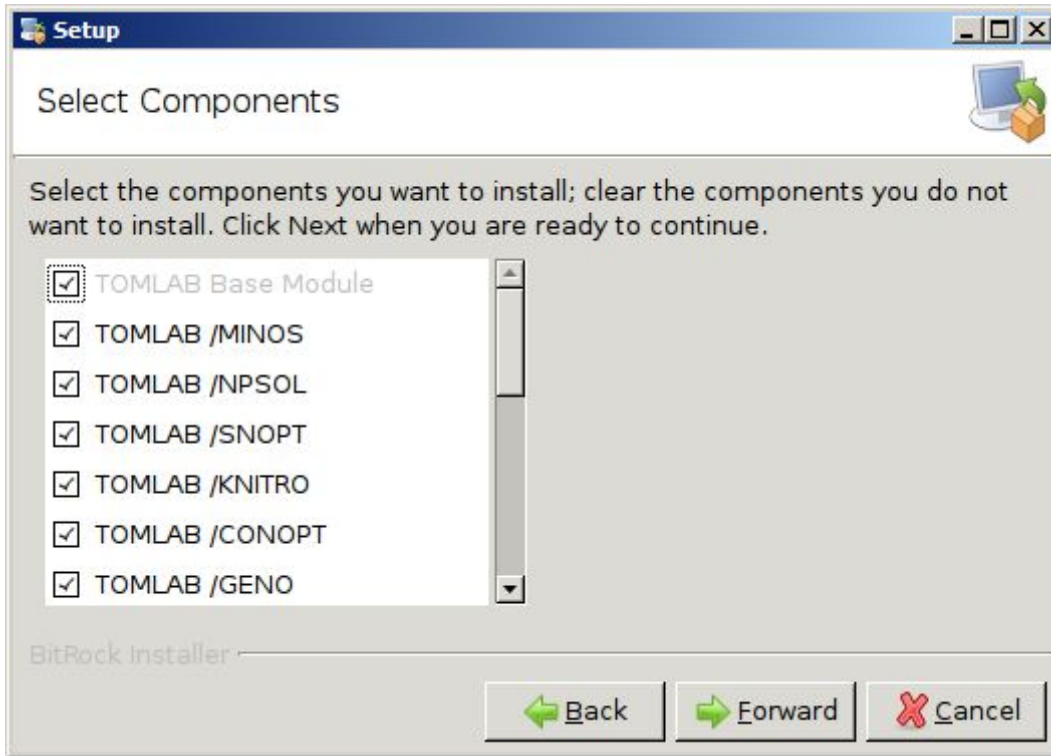
```
Please choose where to install TOMLAB.  
A 'tomlab' directory will be created in this location.  
Installation Directory [/home/user]:
```

The next questions concern package selection. You can safely leave all packages selected by simply pressing Enter at each prompt.

At the next question, press Y to install TOMLAB:

```
Setup is now ready to begin installing TOMLAB Optimization  
Environment on your computer.  
Do you want to continue? [Y/n]: Y
```

An installation progress bar will be shown during installation. After installation, the installer program will exit.



```

-----
Please wait while Setup installs TOMLAB Optimization Environment
on your computer. Installing
0% ----- 50% ----- 100%
#####
-----

```

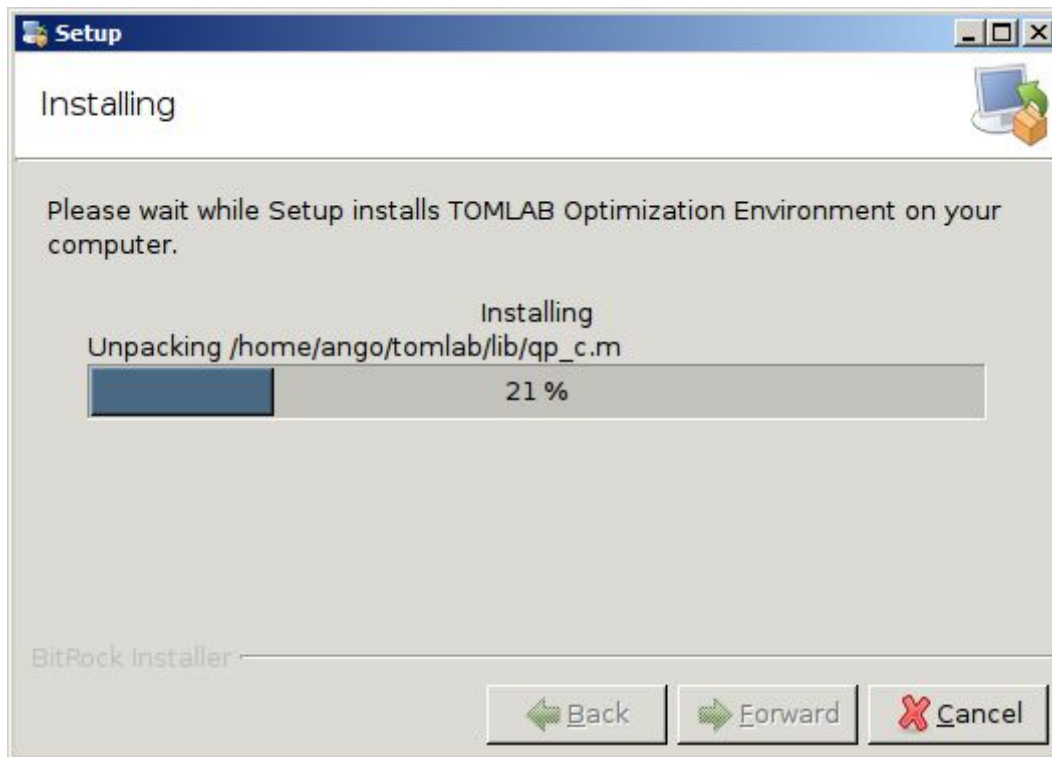
Setup has finished installing TOMLAB Optimization Environment on your computer.

4.3.3 Unattended installation

TOMLAB can be installed without any user interaction at all. To perform an unattended installation, execute the installer binary with the following options:

```
[user@host:~]$ [sudo] ./tomlab-X-setup.bin --mode unattended
--prefix /path/to/installation_dir
```

The argument to the `--prefix` option should not include a trailing `/tomlab` directory - one will be added automatically.



4.4 Upgrade on Unix-like systems

The first step is to save a copy of the license file (and make a backup copy of the old version if needed). Assuming that TOMLAB is installed in `/usr/local/matlab7/tomlab` execute the follow commands:

```
$ cd /usr/local/matlab7/tomlab
$ mv tomlab.lic ../
```

Then remove the old version:

```
$ cd ..
$ rm -f -r tomlab
```

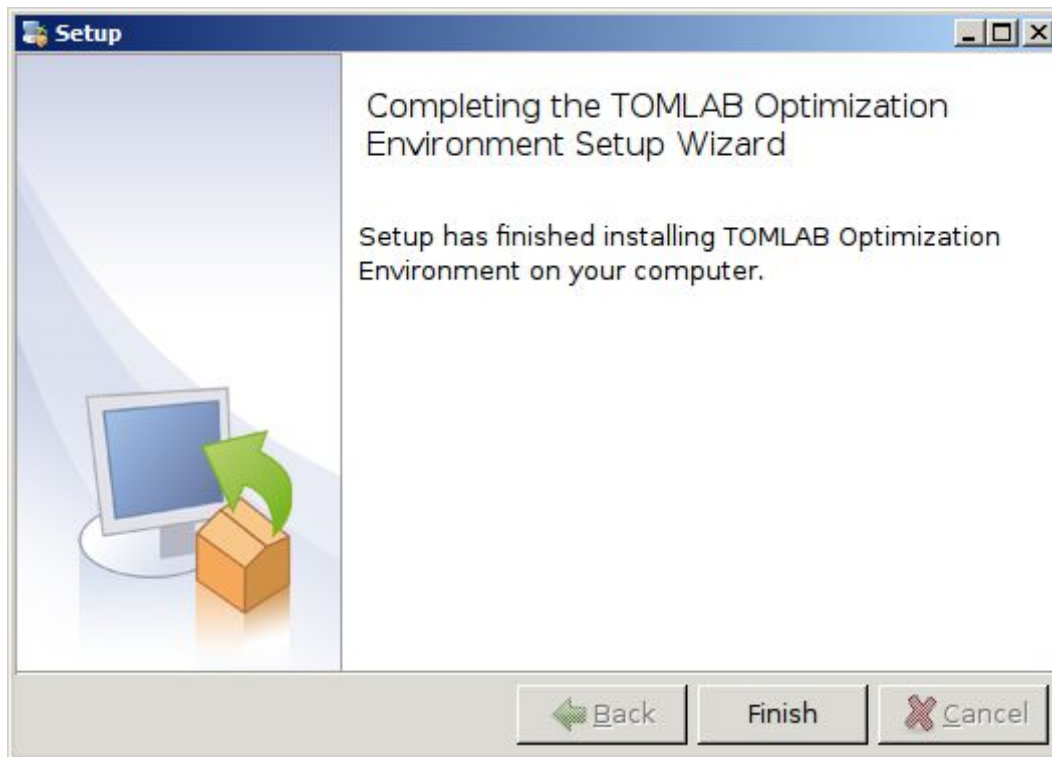
Install the new version as described in section [4.3](#) and move back the license:

```
$ mv tomlab.lic ./tomlab
```

5 Setting environment variables

For Windows TOMLAB requires the directory `tomlab/shared` to be included in the environment variable `PATH`.

For all other operating systems TOMLAB requires the `tomlab/shared` folder to be present in the `LD_LIBRARY_PATH` environment variable before invoking MATLAB (`DYLD_LIBRARY_PATH` on Mac OS X). It is possible to set this in several ways.



5.1 Shared libraries path

The library search path environment variable name differs between different systems. On Linux it is called `LD_LIBRARY_PATH`, while on Mac OS X it is `DYLD_LIBRARY_PATH`. On Windows, it is the `PATH` variable.

The way environment variables are set varies depending on operating systems and shells.

5.1.1 Windows

To set the `PATH` environment variable permanently on Windows, do: Control Panel → System → Advanced → Environment Variables. Assuming TOMLAB was installed in `C:\tomlab`, append (or prepend) `C:\tomlab\shared` separated to the other entries with a semi-colon (`;`) to the `PATH` environment variable.

One can also set the `PATH` environment variable temporarily in a running command shell. This is done by doing

```
C:\> set PATH=%PATH%;C:\tomlab\shared
```

This change will only be applied in that command shell, and will therefore be discarded when the command shell is terminated.

5.1.2 Unix-like systems

Set on command line when invoking MATLAB:

```
[user@host:~]$ LD_LIBRARY_PATH=[$LD_LIBRARY_PATH:]/tpath/shared <ml> &
```

where `<ml>` is the name of your MATLAB executable and `tpath` is the TOMLAB installation path. If `LD_LIBRARY_PATH` is already set to something and you wish to preserve this, include the part in [].

Set in `$HOME/.bashrc`, `$HOME/.profile`, `$HOME/.cshrc` (or `$HOME/.matlab7rc.sh` if it exists):

```
export LD_LIBRARY_PATH=/tpath/shared[:$LD_LIBRARY_PATH] # bash
setenv LD_LIBRARY_PATH /tpath/shared[:$LD_LIBRARY_PATH] # csh and similar
```

If installing for multiple users, you can add similar settings to `/etc/profile`, or optionally to `$MATLAB/bin/.matlab7rc.sh`.

Mac OS X users should set `DYLD_LIBRARY_PATH` instead of `LD_LIBRARY_PATH`.

5.1.3 MATLAB 7.8 on 64-bit Linux

A potential problem concerning shared library versions may lead to crashes when running certain TOMLAB MEX files. This is related to MATLAB and/or the runtime linker loading the wrong version of a support library.

The following workaround is suggested:

Start Matlab 7.8 from a shell prompt with the following option:

```
[user@host:~] LD_PRELOAD=$TOMLAB/shared/libgfortran.so.1.0.0 \
LD_LIBRARY_PATH=$TOMLAB/shared \
$MATLAB78 &
```

In the above command, replace `$TOMLAB` with the path to your TOMLAB installation, and `$MATLAB78` with the name of your MATLAB 7.8 binary. This may vary depending on your particular setup, e.g. if having a symbolic link to the MATLAB binary or not. You may need to specify the full path to the MATLAB installation. For example:

```
[user@host:~]$ LD_PRELOAD=/home/user/tomlab/shared/libgfortran.so.1.0.0 \
LD_LIBRARY_PATH=/home/user/tomlab/shared \
/usr/local/matlab78/bin/matlab &
```

6 Installing TOMLAB license files

In order to run the TOMLAB solvers a valid license file is needed (a plain text file called `tomlab.lic`). This file should normally be placed in the TOMLAB root directory `tomlab`. In case of a demo license, there may be an additional file `tomlab.dat` which also should be put in the TOMLAB root directory.

It is **important** that `tomlab.dat` is writable for the user running TOMLAB.

An environment variable (`TOMLAB_LICENSE_FILE`) need to point to the location of this file (if not placed in the TOMLAB root directory).

For Windows 2000/XP/Vista/7 go to the Control Panel, click on System, select the Advanced Tab, and click on Environment variables. Click on New under user variables. Variable name should be set to `TOMLAB_LICENSE_FILE` and variable value to the location of the file (including file name), for example: `C:\tomlab\tomlab.lic`.

If using a UNIX-like system the following command (depending on Shell) archives the same result:

For CSH-like shells:

```
$ setenv TOMLAB_LICENSE_FILE /usr/local/tomlab/tomlab.lic
```

For Bourne-like shells:

```
$ export TOMLAB_LICENSE_FILE=/usr/local/tomlab/tomlab.lic
```

7 Setting up Xpress

The demo/permanent version of TOMLAB /Xpress requires a special file, `xpress.lic`.

8 Setting up CPLEX

For information on non-standard CPLEX license please contact the TOMLAB support team.

9 Starting TOMLAB

When the files are installed and the license is setup correctly, MATLAB can be started. Change directory to the root directory of TOMLAB (where TOMLAB was installed, that is) and run

```
>> startup
```

This command checks the installation and makes sure the license is properly installed. If everything is ok one can start using TOMLAB. If something is wrong, go back and check every step covered in this guide. If that cannot solve your problem, don't hesitate to contact support at support@tomopt.com.

The QUICKSTART GUIDE (available at <http://tomopt.com>) is good for getting started with TOMLAB.